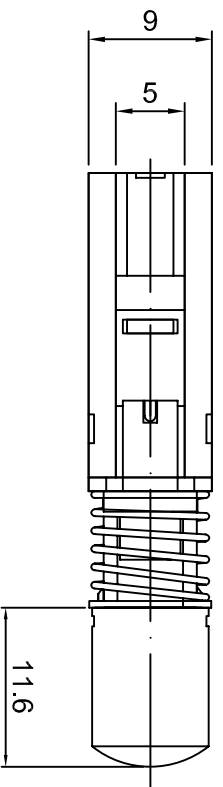
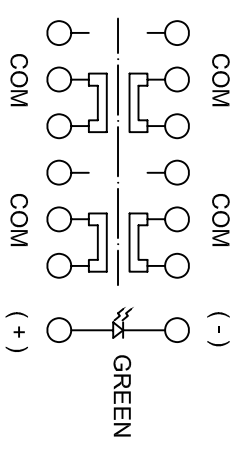


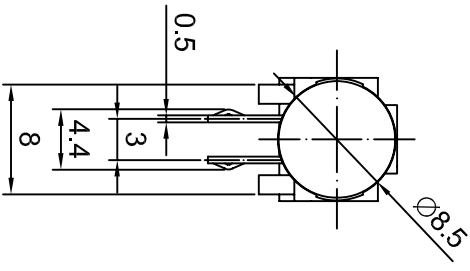
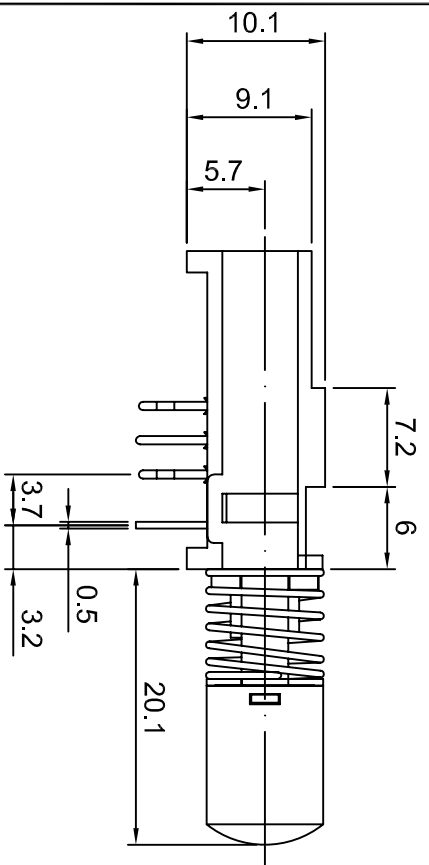
DIMENSION	TOLERANCE
BELOW 10 mm	± 0.3
10-100 mm	± 0.5
ABOVE 100 mm	± 0.8
ANGLE	± 3°



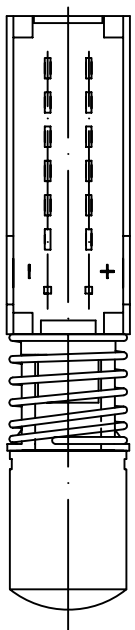
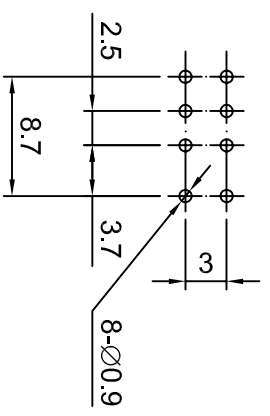
ONE COLOR	TWO COLOR
G GREEN	(R,G) (R,Y) (R,B)
R RED	(G,Y) (G,B) (Y,B)
Y YELLOW	
B BLUE	
W WHITE	



SCHEMATIC



P.C.B HOLE DETAIL



1. LOCK TYPE .
2. RATING : 30 V DC , 0.3 A .
3. CONTACT RESISTANCE : 20 mΩ MAX .
4. INSULATION RESISTANCE : 500 V DC , 100 MΩ MIN .
5. OPERATING FORCE : 200±100 gf .
6. OPERATING TEMPERATURE : -20°C ~ 70°C .
7. OPERATING LIFE : 10,000 CYCLES .

DATE	APPROVAL	DESIGN	ENGINEERING CHANGE DESCRIPTION	DATE	APPROVAL	DESIGN	UNIT	MODE	PUSH BUTTON SWITCH WITH LED
				2012/12/21	KAVEN	Elaine	mm		
					TEREANCE		1 : 1	PART	ML-2LG-BT
					CONFIRM		VIEW	2D FILE NAME	ML-2LG-BT
							VER.	3D FILE NAME	

